

# Helpman THORF 166-7

## Specifications

Marca	Helpman
Tipo	THORF 166-7
Capacidad kW	41,3
Refrigerante	Freon
Número de aficionados	6
Fan del Espacio in mm	7
Descongelación	Hot Gas
m <sup>3</sup> /h	25.690
Tamaños	5350x1040x630 mm (LxWxH)
Comentarios	Y.o.b. 2001
Volume	63 dm <sup>3</sup>
Peso	290 kg
Stock	2



## Description

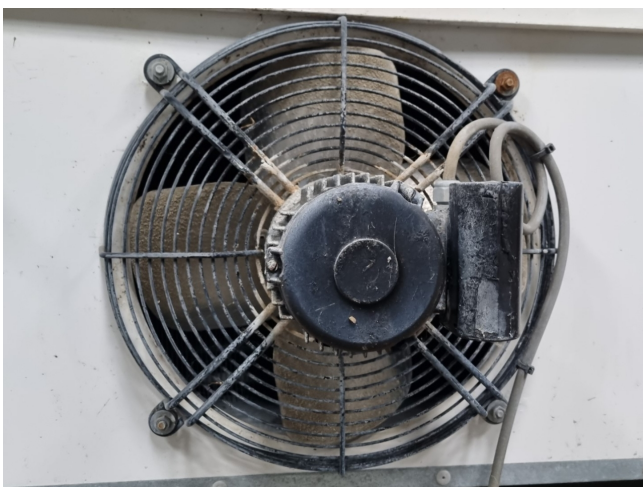
### Used Helpman THORF 166-7

Used Helpman THORF 166-7/VB-H1/6 evaporator on Freon. Complete with 6 ATB ABFT71/4A-7R fans - 50 Hz - 0,22 kW - 1330 RPM - diameter 356 mm that have a total airflow of 25.690 m<sup>3</sup>/h.

\*All components of this used evaporator will be tested on good working, leak free condition (electro engines), coils, bearings) Choosing HOSBV means buying with warranty. We perform a industrial cleaning and rust spots will be covered. Also, we can arrange your shipment.



<b>HELPMAN</b>		Apparatenfabriek Helpman BV Peizerweg 97 NL - 9727 AJ Groningen	
Type	THORF 166-7/VB-H1/6 230 G1		
Serial nr.	6774/6259-3-001		
Medium	R22/R404A		
Min/max workingtemperature	-40/55	°C	
Design/testpressure	20/25	bar	
Volume	63.0	dm <sup>3</sup>	
Weight (empty)	290	kg	
		2001	



<b>ATB</b>		1~Mot 71	
ABFT71/4A-7R		7943421 X 069	
HELPMAN-NR.: 300820		/U10 333977	
CB8uF400VDB		WSK 130	
Th.Cl. F	IP55	EN 60034	
⊥	220-240 V	2.0 A	
cosφ 0,90	0,22 kW	1330/min 50 Hz	
⊥	220-254 V	1,83 A	
cosφ 0,90	0,22 kW	1630/min 60 Hz	

